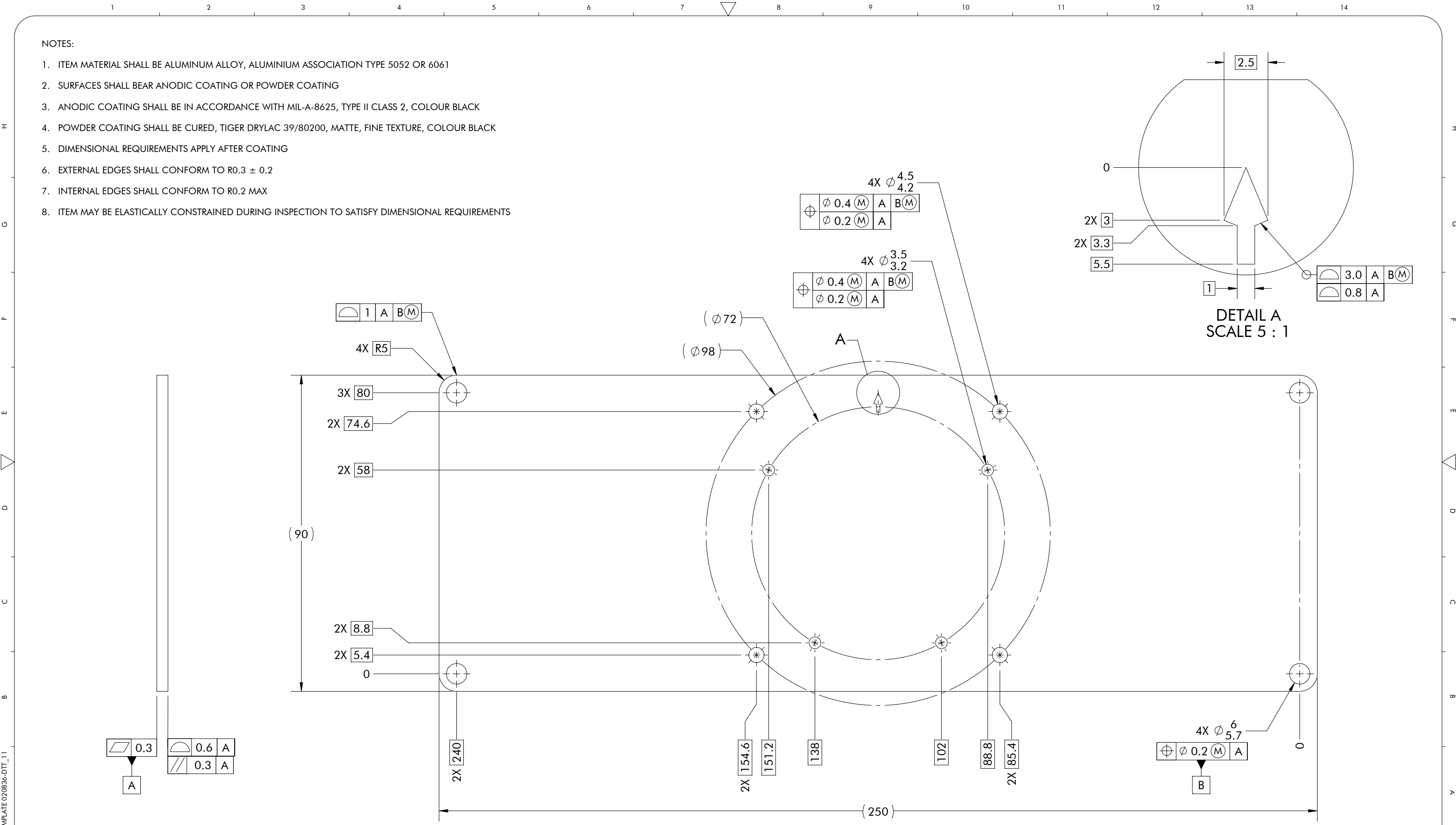


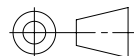
NOTES:

- ITEM MATERIAL SHALL BE ALUMINUM ALLOY, ALUMINIUM ASSOCIATION TYPE 5052 OR 6061
- SURFACES SHALL BEAR ANODIC COATING OR POWDER COATING
- ANODIC COATING SHALL BE IN ACCORDANCE WITH MIL-A-8625, TYPE II CLASS 2, COLOUR BLACK
- POWDER COATING SHALL BE CURED, TIGER DRYLAC 39/80200, MATTE, FINE TEXTURE, COLOUR BLACK
- DIMENSIONAL REQUIREMENTS APPLY AFTER COATING
- EXTERNAL EDGES SHALL CONFORM TO $R0.3 \pm 0.2$
- INTERNAL EDGES SHALL CONFORM TO $R0.2 \text{ MAX}$
- ITEM MAY BE ELASTICALLY CONSTRAINED DURING INSPECTION TO SATISFY DIMENSIONAL REQUIREMENTS



TEMPLATE 020836-DTT_11

THIRD ANGLE PROJECTION



UNLESS OTHERWISE SPECIFIED

UNITS ARE MILLIMETRES & GRAMS
 NOTES SUPERSEDE TITLE BLOCK
 CALLOUTS SUPERSEDE NOTES
 DIMENSIONS & TOLERANCES SHALL BE INTERPRETED
 IN ACCORDANCE WITH ASME Y14.5-2018



PROPRIETARY AND CONFIDENTIAL
 INFORMATION CONTAINED IN THIS DRAWING IS
 THE SOLE PROPERTY OF CLEARPATH ROBOTICS INC.
 PROHIBITED TO REPRODUCE IN PART OR AS A WHOLE WITHOUT
 WRITTEN PERMISSION OF CLEARPATH ROBOTICS INC.

DRAFT RF 29 NOV 2022

ITEM NAME

PLATE—240 X 80, ATTACHMENT INTERFACE

PAPER 432 X 279

SCALE 1:1

DO NOT SCALE

ITEM NUMBER

028866

SHEET 1 OF 1

REV.

1